

Description

The K-TERM 42 is a selcal decoding and encoding module. It can be used on analogue channels and integrated in the following Motorola radios:

Portable radio
DP340x / DP360x

Mobile radio
DM3400x and DM3600x

- Supports selcal norms:
ZVE11/2/2, CCIR70/100, EEA
- All buttons are programmable for encoding sequences.
- customised functions

Programming with K-TERM codeplug CPS.

INSTALL

In the portable units, the K-TERM 42 replaces the Motorola installed board.



In the mobile unit, the K-TERM 42 is installed behind the control head. An additional flex cable and mounting screws are required (please order directly from Motorola).



ENCODER

Encoder sequence (1 to 16)

- Select signalling system
- Tone sequence 1 to 12
- Pretime msec
- Extended first tone duration (msec)
- Variable Digits (A1-A8)

Encoder telegram (1 to 16)

- Encoder sequence 1
- Encoder sequence 2
- Encoder sequence 3
- Acknowledge telegram (NO/ACK1)

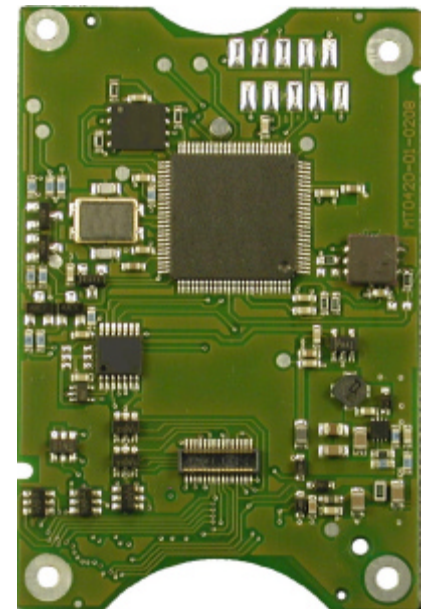
DECODER

Decoder definition (1 to 16)

- Select signalling system
- Select number of sequences (1 to 3) per sequence:
 - Decoder sequence1 string
 - Decoder sequence2 string
 - Decoder sequence3 string
- For group call define sequence
- Show variable digists (A1-A8)
- Call alert type / different sounds
- Auto acknowledge (select encoder)
- Call reminder

OPTIONS

Tilt switch for "man down" function.
Alarm on analogue channels via 5ton signalling.
Alarm on digital channels via digital call.



PER CHANNEL

Fixed encoder calls

- Call 1 (Disable/Enable) Nr, Button
- Call 2 (Disable/Enable) Nr, Button
- Call 3 (Disable/Enable) Nr, Button
- Call 4 (Disable/Enable) Nr, Button

Variable calls (A1-A8)

- Use keyboard

Decoder assignment

- Select decode telegrams (1 to 16)

Loudspeaker function

- Normally open / closed
- ON / OFF button control
- Automatic reset on timeout

Kilchherr Elektronik AG

Aeschstrasse 25
3110 Münsingen
Switzerland
Phone: +41 31 721 36 95
Fax: +41 31 721 48 10
Email: info@kilchherr.com
Web: www.kilchherr.com